

THE TWENTY THREE

CATCHING UP WITH FAMILY MEMBERS OF...

ALFRED CHURCHILL LOCKYER

CHARLES AGNEW

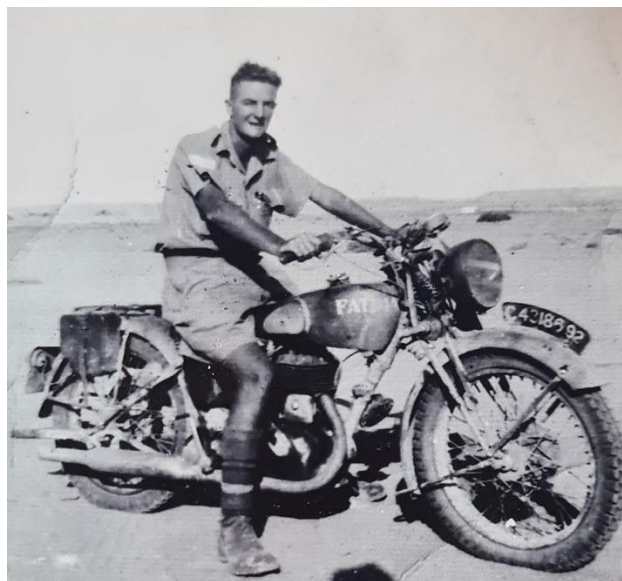
GEORGE GOODALL BELL

SIDNEY WILLIAM CAINS

ALFRED CHURCHILL LOCKYER



Gordon Whiteacre and his wife Dianne live in Mission Bay, Auckland. Gordon is Alfred's second cousin. Alfred's parents who lived in Wellington after they emigrated from Ireland were John Adams Lockyer and Gertrude. John's sister Maude was Gordon's grandmother and Alfred's Aunt. Maude Lockyer married Edward Whiteacre. The couple named their son Edward (pictured below), who is Alfred's cousin. Edward married Winifred Noy and they named their son Gordon, who is Alfred's cousin once removed.



I contacted Gordon a couple of months ago and arranged to meet up in Auckland at the beginning of our trip to New Zealand. On 30th December, Richard and I, together with Bill McGregor (RNZAF retired), met at the Paper Moon in Mairangi Bay for brunch. I think that Gordon was delighted to meet us as we were to meet him. I did remark that Gordon looks very much like his father. We talked about Alfred and how paths had led us to

meet in Auckland and discuss Alfred who is remembered each year at the ANZAC ceremony held at Stonefall Cemetery. Gordon remembered as a child that he had visited 'Auntie Gertie' in Wellington.



Completely having forgotten that Gordon was in possession of Alfred's war medal for service, Gordon had kindly brought this to our meeting. Well, that caused me to shed a few tears. To be able to actually hold the medal that had been sent to John and Gertrude Lockyer when Alfred was killed in service, was a privilege.



When back in Wellington, Richard and I were escorted by Becky Masters-Ramsay of the Commonwealth War Graves Commission in Wellington, to the grave of John and Gertrude Lockyer in Karori Cemetery, Wellington. High on a hill, in the sunshine, we placed a poppy on their grave.



Our thanks to Gordon and all the Lockyer family members for allowing us this glimpse into Alfred's life.